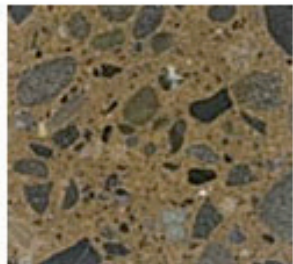
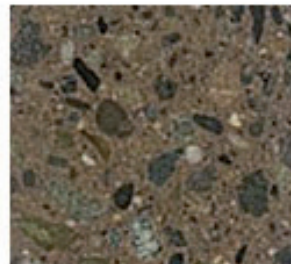


# Gamme de coloris

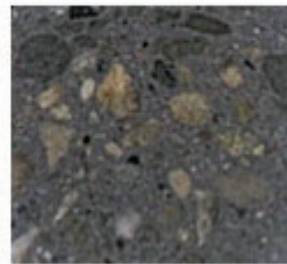
## Agrégats exposés



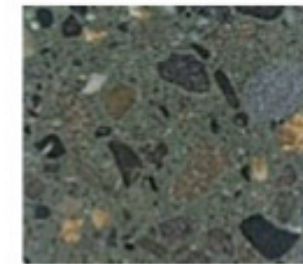
**Crème  
brûlée**



**Cuir**



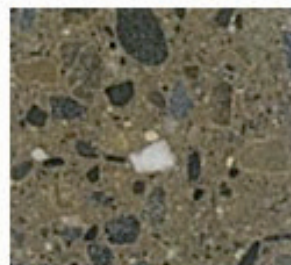
**Anthracite**



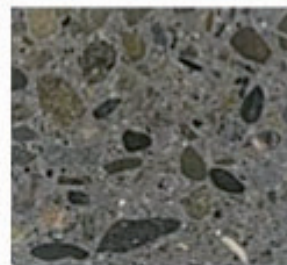
**Champ  
d'herbe**



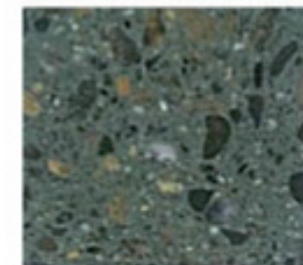
**Tera  
Cota**



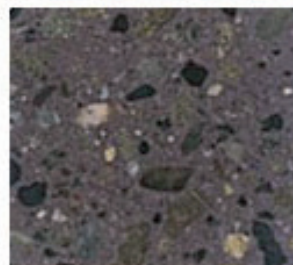
**Sable**



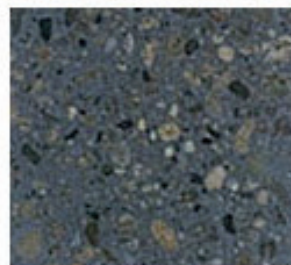
**Gris  
étain**



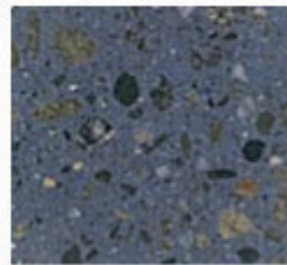
**Panier  
printanier**



**Prune  
passion**



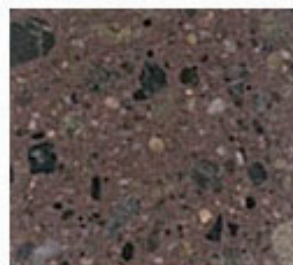
**Bleu de  
Vénus**



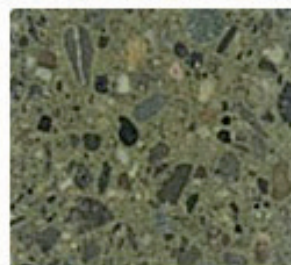
**Bleu  
denim**



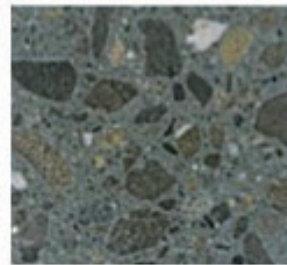
**Argent**



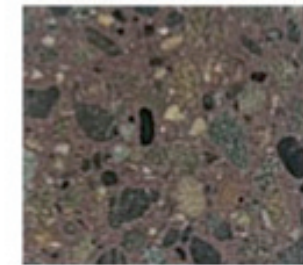
**Nougat**



**Olive**



**Bleu  
lagune**



**Bordeaux**

# Gamme de coloris

Finis polis

